

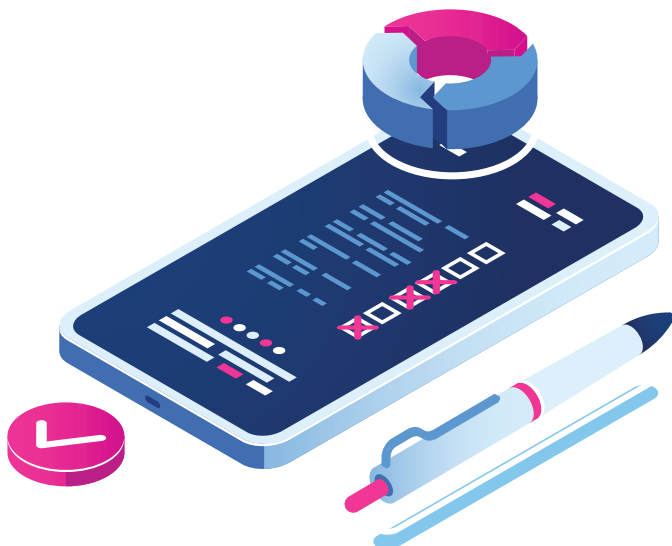
## KAJIAN BRUCERT - MAJORITI CENDERUNG BEKERJA DARI PEJABAT MAJORITY PREFERS WORK FROM OFFICE - BRUCERT SURVEY

Ketika kakitangan dan rakan-rakan sekerja kitani terus bekerja dari rumah selama hampir tiga bulan dan sekatan Covid-19 masih berkuat kuasa, Pasukan Tindak Balas Kecemasan Komputer Brunei (BruCERT) baru-baru ini menjalankan kaji selidik dalam talian untuk memahami pengalaman orang ramai mengenai belajar atau bekerja dari rumah. Kajian disertai oleh 1,574 responden dan dijalankan dari 3 hingga 16 September 2021.

Keputusan menunjukkan secara keseluruhan, hanya 30% lebih suka belajar atau bekerja dari rumah. Majoriti pula lebih suka bekerja dari sekolah /pejabat. 83% pelajar dan 76% pendidik lebih suka berada di sekolah. 65% pekerja sektor awam dan swasta lebih suka bekerja di pejabat, manakala mereka yang bekerja sendiri (51%) cenderung Bekerja dari Pejabat (WFO) dan 49% cenderung Bekerja Dari Rumah (WFH). Mereka yang tidak mempunyai pekerjaan pula lebih suka Bekerja dari Rumah, dengan 53% lebih suka tinggal di rumah.

Oleh kerana kebanyakan kerja dilakukan dalam talian sepanjang tempoh Bekerja dari Rumah, platform dalam talian yang paling popular digunakan adalah WhatsApp (91%), Zoom (73%) dan Microsoft Teams (70%)

Bagi keterangan lanjut mengenai kajian, layari lama sesawang [www.secureverifyconnect.info](http://www.secureverifyconnect.info) atau [www.brucert.org.bn](http://www.brucert.org.bn).



*While our staff and associates continue to work from home for almost three months and the Covid-19 restrictions still enforced, the Brunei Computer Emergency Response Team (BruCERT) recently conducted an online survey to understand the local experience of studying or working from home. It was participated by 1,574 respondents and conducted from 3rd to 16th September 2021.*

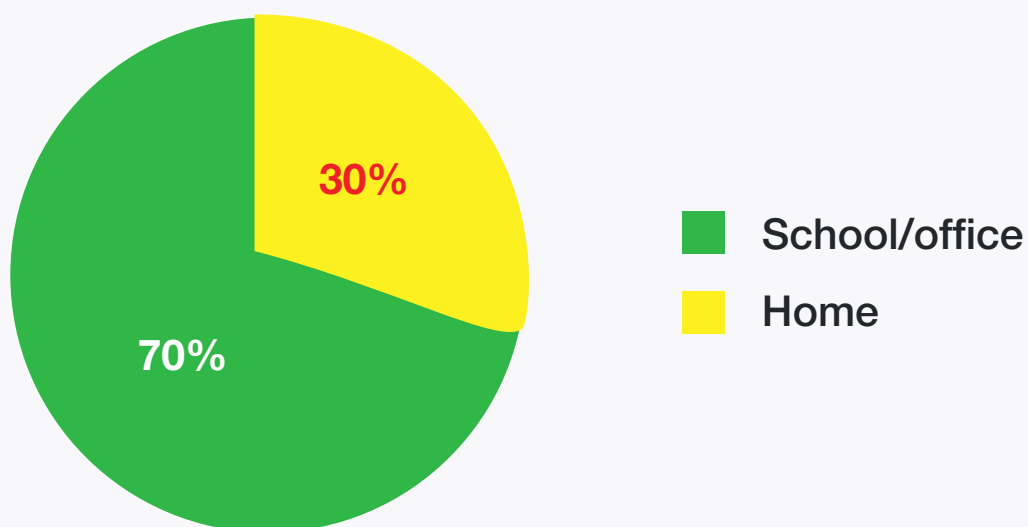
*The results indicate that overall, only 30% prefer to study or work from home. The majority prefer to work from school/office. 83% of students and 76% of educators would rather be in school. 65% of public and private sector employees prefer to work in the office, while the*

self-employed are split between Work from Office (WFO) and Work from Home (WFH) at 51% and 49% respectively. Unemployed individuals have the highest preference for a Work from Home arrangement, with 53% preferring to stay at home.

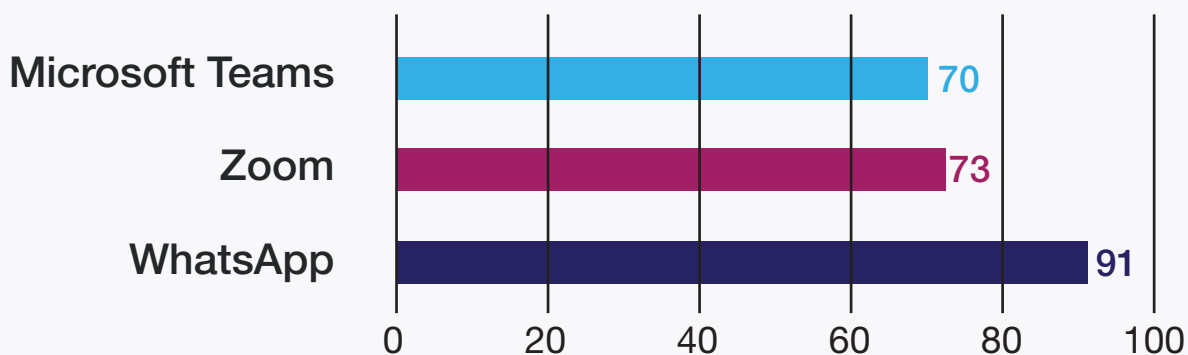
Since most of the work is done online throughout the WFH period, the most popular online platforms being utilized are WhatsApp (91%), Zoom (73%) and Microsoft Teams (70%).

For details of the survey, visit [www.secureverifyconnect.info](http://www.secureverifyconnect.info) or [www.brucert.org.bn](http://www.brucert.org.bn) for more information.

### PREFERENCE FOR WORKING FROM HOME OR SCHOOL/OFFICE



### ONLINE PLATFORMS FOR STUDYING/WORKING FROM HOME



## LEBIH RAMAI SUKERELAWAN DIPERLUKAN *MORE VOLUNTEERS NEEDED*

Dalam usaha berterusan membendung penularan COVID-19 di negara ini, Kementerian Kesihatan menyeru lebih ramai sukarelawan untuk membantu menjalankan tugas berisiko rendah seperti pengesanan kontak. Pengesanan kontak adalah proses mengenal pasti semua orang yang mempunyai kontak dengan pesakit COVID-19 dalam tempoh dua minggu kebelakangan. Persatuan Bulan Sabit Merah Negara Brunei Darussalam (BDRCS) yang menyokong operasi Covid-19, juga menyeru lebih ramai sukarelawan untuk membantu mereka mengendalikan pertanyaan awam melalui Talian BruHealth dan Talian Kesihatan 148.

Pada masa ini, sukarelawan tunggal kitani di BDRCS, Mohd Zaimi Abdullah Mari, telah ditugaskan ke Pasukan Sokongan Perubatan BRC Covid19 yang berpangkalan di Ibu Pejabat BRC di Anggerek Desa. Tugas harian beliau termasuk memindahkan pesakit ke NIC di Tutong dan Temburong serta menghantar bekalan makanan kepada keluarga yang dikenakan Perintah Kuarantin.



Mohd Zaimi ketika melaksanakan tugas rutin  
*Mohd Zaimi carrying out his routine tasks*



Bersama-sama sukarelawan lain | *With other volunteers*

*With the fight to curb the spread of COVID-19 in the country continues, the Ministry of Health has called for more volunteers to assist in carrying out low-risk tasks such as contact tracing. Contact tracing is the process of identifying all people that a COVID-19 patient has come in contact with in the last two weeks. The Brunei Darussalam Red Crescent Society (BDRCS) which is supporting the Covid-19 operations, has also called for more volunteers to help them managing public enquiries via BruHealth and Health Line 148.*

*Currently our sole volunteer at BDRCS, Mohd Zaimi Abdullah Mari, has been assigned to BRC Covid19 Medical Support Team based at the BRC Headquarters in Anggerek Desa. His daily tasks include transferring patients to NIC in Tutong and Temburong as well as delivering food supplies to families under the Quarantine Order.*

## PENGUSAHA AGRO KITANI MULA MELIHAT HASIL TITIK PELUH MEREKA *OUR AGROPRENEURS BEGIN TO SEE THE FRUITS OF THEIR LABOUR*

*Selepas empat minggu menamatkan perkhidmatan di Nexus dan menyertai skim penanaman cili sepenuh masa di Taman Agrotech di Tungk, bekas rakan-rakan sekerja kitani yang kini menjadi pengusaha agro, telah menunjukkan beberapa kemajuan yang menggalakkan. Mereka yang memulakan penanaman lebih awal kini mula melihat hasil titik peluh mereka dengan tanaman cili tumbuh dengan baik, menjanjikan hasil tuaian yang baik dalam masa kira-kira 8 minggu lagi jika semuanya berjalan lancar.*

*After four weeks of being offboarded from Nexus and joining the chilli farming scheme full time at the Agrotech Park in Tungk, our former associates turned agropreneurs, have been showing some encouraging progress. Those who started the transplanting earlier are now beginning to see the fruits of their labour with the chilli plants growing very well, promising a good harvest in about 8 weeks' time if everything goes smoothly.*



Peringkat penanaman bermula | *The transplanting stage*



Tiga minggu kemudian | Three weeks later



Pengusaha agro kitani ketika dikunjungi oleh kakitangan HR | Our agropreneurs receiving guests from HR department